

PETERSON ELEMENTARY SCHOOL

BOUNDARY CURVE DATA
 $\Delta = 87^\circ 14' 42''$
 $R = 515.00'$
 $L = 789.20'$
 $LC = 710.60'$
 (LC BEARING = N. 83° 35' 13" E.)

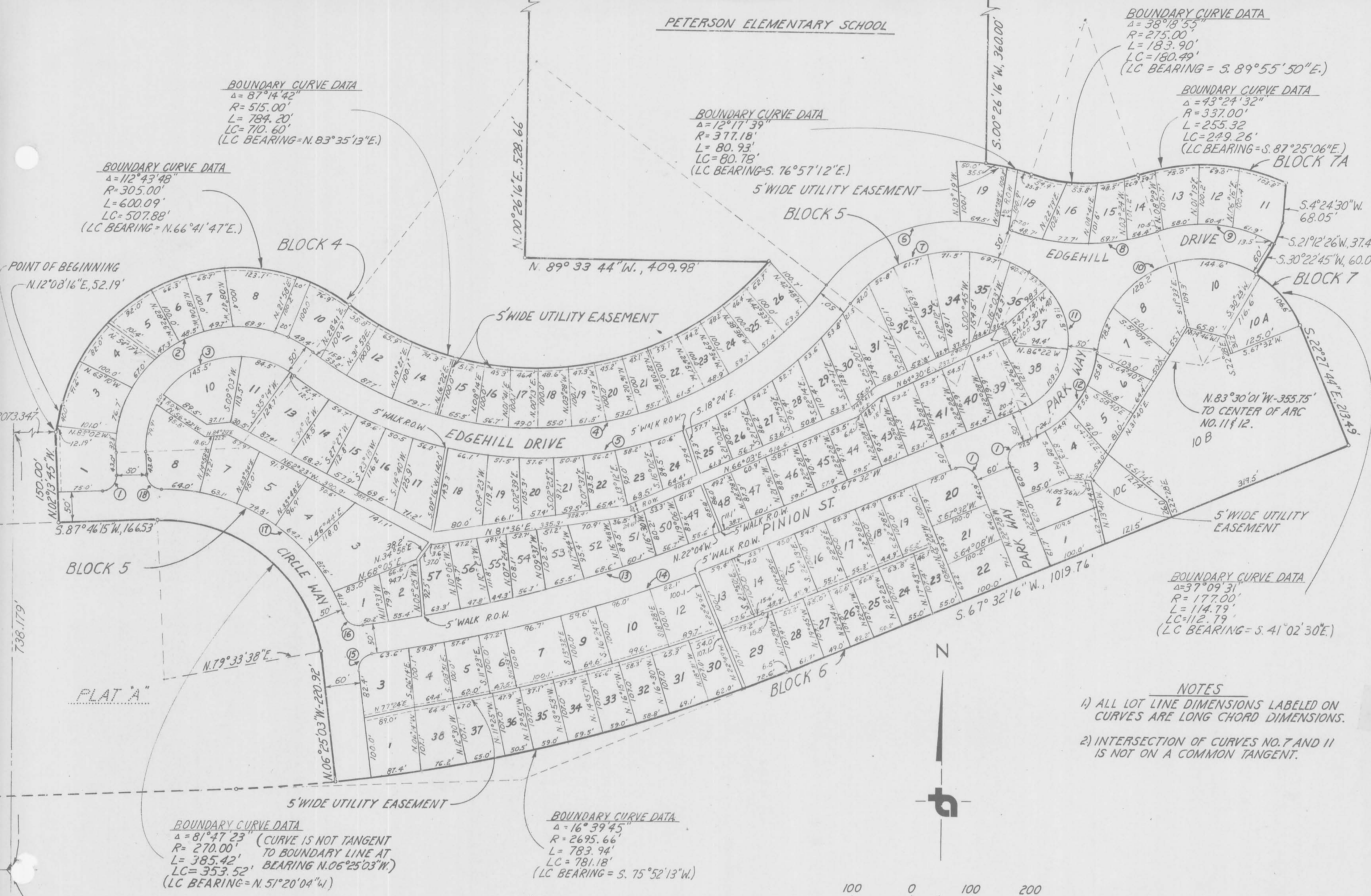
BOUNDARY CURVE DATA
 $\Delta = 12^\circ 17' 39''$
 $R = 377.18'$
 $L = 80.93'$
 $LC = 80.78'$
 (LC BEARING = S. 76° 57' 12" E.)

BOUNDARY CURVE DATA
 $\Delta = 38^\circ 13' 55''$
 $R = 275.00'$
 $L = 183.90'$
 $LC = 180.49'$
 (LC BEARING = S. 89° 55' 50" E.)

BOUNDARY CURVE DATA
 $\Delta = 43^\circ 24' 32''$
 $R = 337.00'$
 $L = 255.32'$
 $LC = 249.26'$
 (LC BEARING = S. 87° 25' 06" E.)

BOUNDARY CURVE DATA
 $\Delta = 112^\circ 43' 48''$
 $R = 305.00'$
 $L = 600.09'$
 $LC = 507.88'$
 (LC BEARING = N. 66° 41' 47" E.)

POINT OF BEGINNING
 $N. 12^\circ 08' 16'' E, 52.19'$



BOUNDARY CURVE DATA
 $\Delta = 81^\circ 47' 23''$ (CURVE IS NOT TANGENT TO BOUNDARY LINE AT
 $R = 270.00'$
 $L = 385.42'$ BEARING N. 06° 25' 03" W.)
 $LC = 353.52'$ (LC BEARING = N. 51° 20' 04" W.)

BOUNDARY CURVE DATA
 $\Delta = 16^\circ 39' 45''$
 $R = 2695.66'$
 $L = 783.94'$
 $LC = 781.18'$
 (LC BEARING = S. 75° 52' 13" W.)

BOUNDARY CURVE DATA
 $\Delta = 37^\circ 09' 31''$
 $R = 177.00'$
 $L = 114.79'$
 $LC = 112.79'$
 (LC BEARING = S. 41° 02' 30" E.)

- NOTES**
- 1) ALL LOT LINE DIMENSIONS LABELED ON CURVES ARE LONG CHORD DIMENSIONS.
 - 2) INTERSECTION OF CURVES NO. 7 AND 11 IS NOT ON A COMMON TANGENT.

I, HAROLD A. LIN, Registered Civil Engineer, certificate No. 1300, State of Utah, I further made a survey of the above described land, and have submitted the same to be known as shown on this plat.

| COURSE | DIST. | BEARING |
|--------------|--------|---------|
| N12°08'16"E | 52.19 | FE |
| N66°41'47"E | 507.88 | FE |
| N83°35'13"E | 710.60 | FE |
| N00°26'16"E | 528.66 | FE |
| S00°26'16"E | 360.00 | FE |
| S76°57'12"E | 80.78 | FE |
| S89°35'50"E | 180.49 | FE |
| S87°25'06"E | 249.26 | FE |
| S21°12'26"W | 37.40 | FE |
| S22°27'44"E | 213.49 | FE |
| N06°25'03"W | 220.92 | FE |
| N51°20'04"W | 353.52 | FE |
| N.02°13'45"W | 150.00 | FE |

DATE April 16 19

Know all men by these presents, that the above described land has been divided into lots and blocks as shown on this plat.

SUNNY

SUBDIVISION - PLAT "A"

In witness whereof, I, the undersigned, have hereunto set my hand and the seal of my office this _____ day of _____, 19__.

State of California
 County of Alameda

ACKNOWLEDGMENT
 COUNTY OF _____ STATE OF UTAH: S.S.
 ON THE _____ DAY OF _____, 19__ PERSONALLY
 APPEARED BEFORE ME _____
 WHO BEING BY ME DULY SWORN OR AFFIRMED, DID SAY THAT _____ IS/ARE THE _____ OF _____

CURVE DATA

| | | | | | |
|--|--|--|---|---|---|
| ① $\Delta = 90^\circ$ $R = 25.00'$ $L = 39.27'$ $LC = 35.35'$ | ④ $\Delta = 90^\circ 00' 56''$ $R = 615.00'$ $L = 966.12'$ $LC = 869.80'$ | ⑦ $\Delta = 85^\circ 28' 54''$ $R = 227.18'$ $L = 338.94'$ $LC = 308.37'$ | ⑩ $\Delta = 113^\circ 52' 46''$ $R = 177.00'$ $L = 351.80'$ $LC = 296.69'$ | ⑬ $\Delta = 15^\circ 09' 44''$ $R = 2438.66'$ $L = 652.44'$ $LC = 643.46'$ | ⑯ $\Delta = 77^\circ 27' 09''$ $R = 25.00'$ $L = 33.80'$ $LC = 31.28'$ |
| ② $\Delta = 129^\circ 26' 19''$ | ⑤ $\Delta = 90^\circ 00' 56''$ | ⑧ $\Delta = 90^\circ 00' 56''$ | ⑪ $\Delta = 90^\circ 00' 56''$ | ⑭ $\Delta = 90^\circ 00' 56''$ | ⑰ $\Delta = 90^\circ 00' 56''$ |